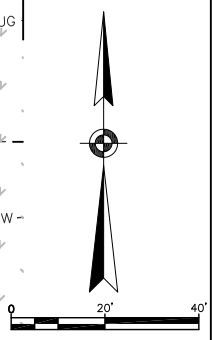
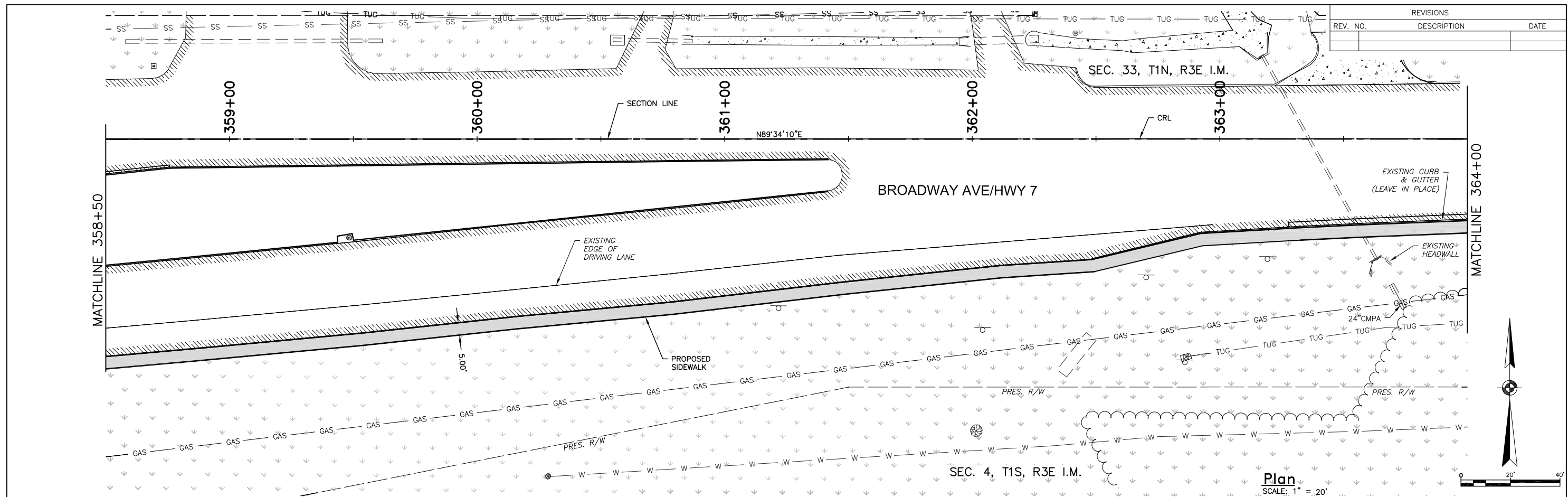
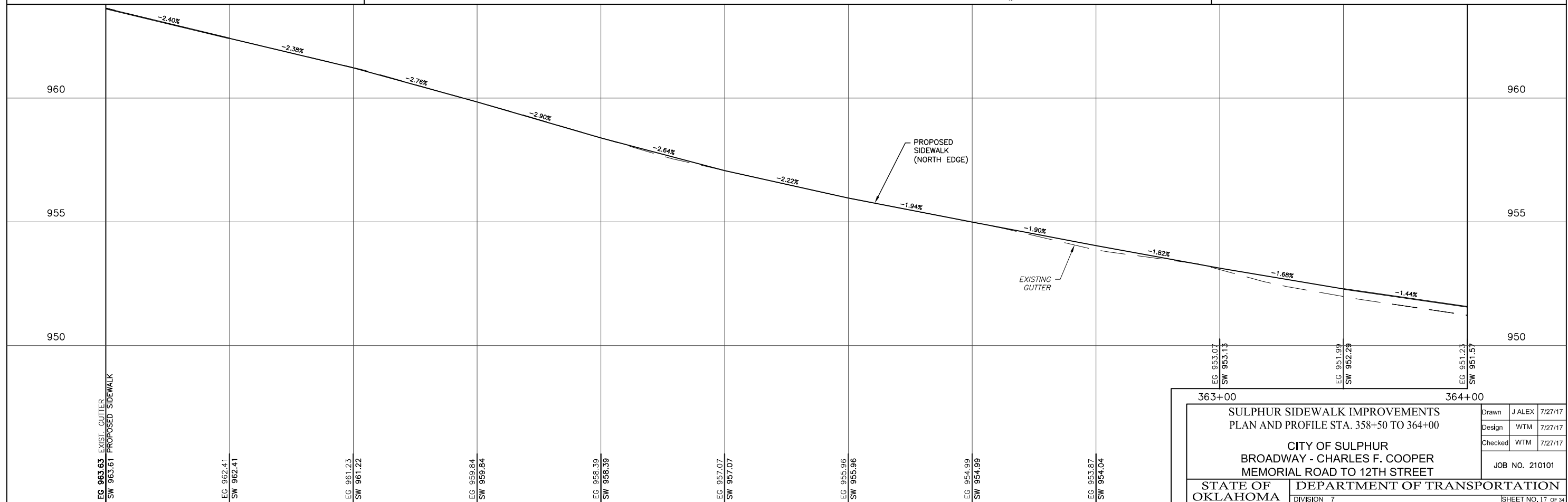


REVISIONS		
REV. NO.	DESCRIPTION	DATE



LEGEND														
EXIST. ASPHALT	EXIST. GRASS	EXIST. GRAVEL	EXIST. CONCRETE	CLEAN OUT	SANITARY SEWER MH	GASOLINE FILL CAP	TELEPHONE PEDESTAL	DRAINAGE INLET	SIGN	GAS METER	VENT PIPE	FLAG POLE	LIGHT POLE	WATER VALVE
BENCH MARK	GAS LINE MARKER	TRAFFIC VAULT	FIRE HYDRANT	SIGNAL VAULT	GUY ANCHOR	WATER METER	STORM SEWER MH	MAIL BOX	YARD HYDRANT	PROPOSED SIDEWALK	PROPOSED CONCRETE			



363+00		364+00	
SULPHUR SIDEWALK IMPROVEMENTS PLAN AND PROFILE STA. 358+50 TO 364+00			
CITY OF SULPHUR BROADWAY - CHARLES F. COOPER MEMORIAL ROAD TO 12TH STREET			
STATE OF OKLAHOMA		DEPARTMENT OF TRANSPORTATION	
DIVISION 7		JOB NO. 210101	
Drawn	J ALEX	7/27/17	
Design	WTM	7/27/17	
Checked	WTM	7/27/17	
SHEET NO. 17 OF 34			

J:\Sulphur\210101\lead\2017 Phase 1\210101 GRADING_02.dwg, 8/10/2017 10:15:22 AM, jona, 1:2,046/77